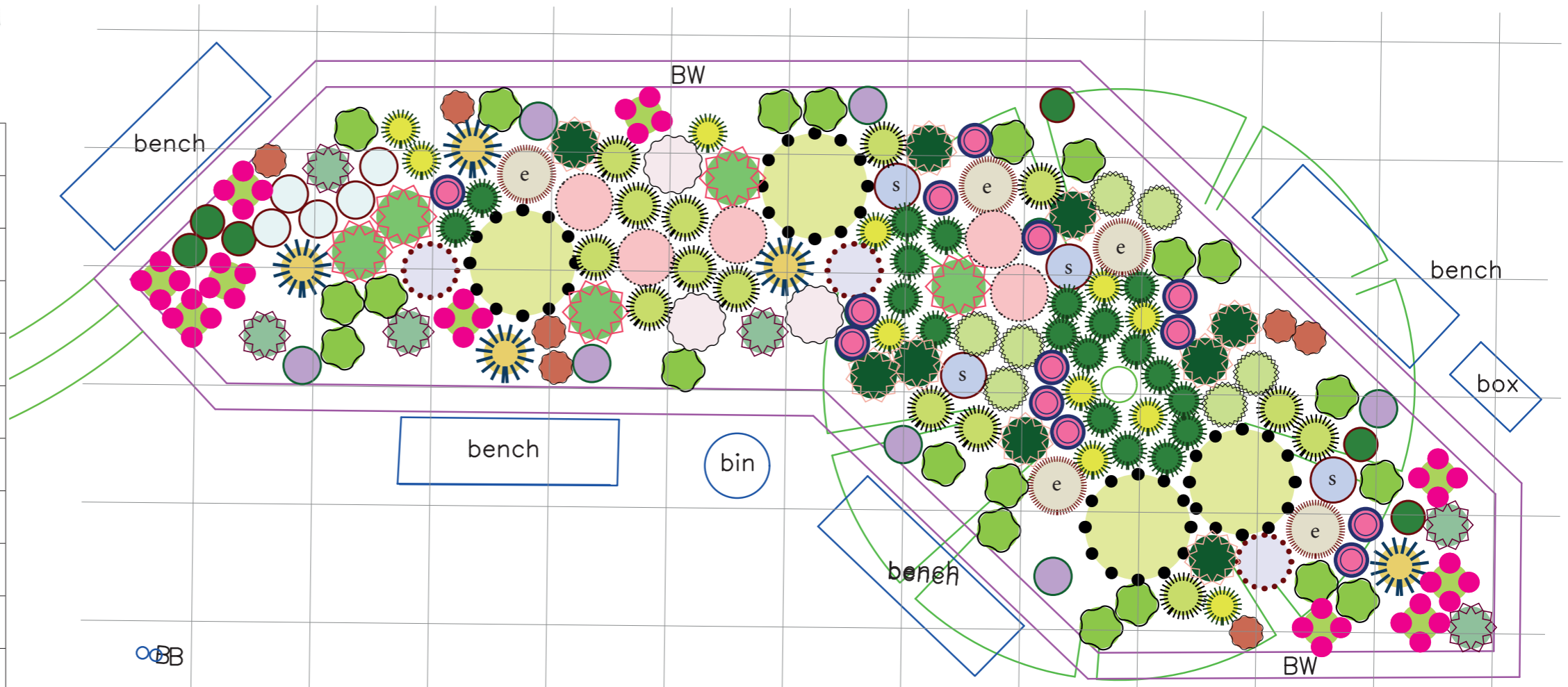




	5 <i>Anemanthele lessoniana</i>
	3 <i>Anemone x hybrida</i> ,Honorine Jobert'
no symbol	15 <i>Anthriscus sylvestris</i> ,Ravenswing'
no symbol	15 <i>Aquilegia vulgaris</i> ,White Barlow'
	6 <i>Bergenia</i> ,Silberlicht'
	7 <i>Campanula poscharskyana</i>
	11 <i>Carex oshimensis</i> ,Evergold'
	3 <i>Cenolophium denudatum</i>
	7 <i>Deschampsia caespitosa</i> ,Goldtau'
	13 <i>Digitalis</i> ,Pink Panther'
	5 <i>Eurybia divaricata</i>
	5 <i>Gaura lindheimeri</i>
no symbol	20 <i>Geranium x cantabrigiense</i> ,Saint Ola'
	14 <i>Hakonechloa macra</i> ,Aureola'
	6 <i>Hebe albicans</i>
	6 <i>Heuchera</i> ,Obsidian'
	20 <i>Heuchera villosa</i> var. <i>macrorrhiza</i>
	4 <i>Hydrangea arborescens</i> ,Lime Rickey'
	19 <i>Luzula nivea</i>
	5 <i>Persicaria amplexicaule</i> ,Inverleith'
	5 <i>Phormium</i> ,Sundowner'
	10 <i>Salvia microphylla</i> ,Heatwave Blast'
	4 <i>Salvia officinalis</i> ,Purpurascens'
	9 <i>Sarcococca confusa</i>



**How to start:**

- put out *Hydrangeas*, *Phormium* and *Sarcococca* first
- add *Anemanthele*, *Salvias* and *Hebe*, followed by
- *Anemone*, *Persicaria* and *Hakonechloa*
- add all other plants
- finish with *Geranium* ,*St. Ola*' around the edges
- fill gaps between plants which will eventually be bigger (like *Anemone* and *Persicaria*) with *Anthriscus* (middle of bed) and *Aquilegia*

**Project**

CHISWICK HIGH ROAD / OLD MARKET SQUARE  
FLOWER BEDS

**Drawing No**

**BED 1**  
Chiswick High Road / Annandale Road (31,5 m<sup>2</sup>)

**Client**

Chiswick Flower Market, London W4

**Designer**

Dipl. Ing. Jutta Wagner, teowagner@aol.com

**Surveyer**

Matrix Surveys, London W4

**Date**

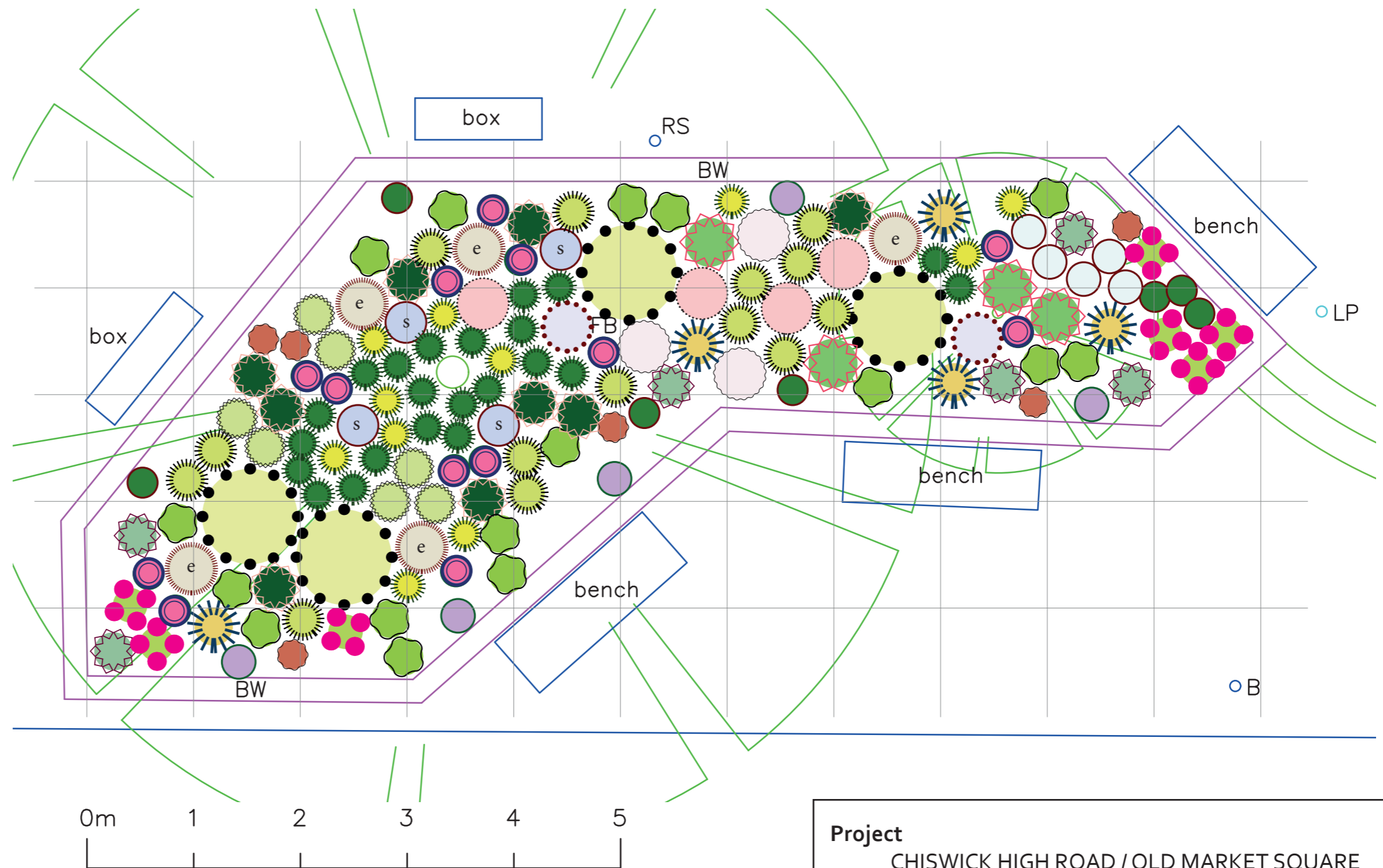
21. October 2021

**drawn by**

JW



	5 <i>Anemanthele lessoniana</i>
	3 <i>Anemone x hybrida</i> ,Honorine Jobert'
no symbol	15 <i>Anthriscus sylvestris</i> ,Ravenswing'
no symbol	15 <i>Aquilegia vulgaris</i> ,White Barlow'
	7 <i>Bergenia</i> ,Silberlicht'
	5 <i>Campanula poscharskyana</i>
	11 <i>Carex oshimensis</i> ,Evergold'
	2 <i>Cenolophium denudatum</i>
	7 <i>Deschampsia caespitosa</i> ,Goldtau'
	13 <i>Digitalis</i> ,Pink Panther'
	5 <i>Eurybia divaricata</i>
	5 <i>Gaura lindheimeri</i>
no symbol	20 <i>Geranium x cantabrigiense</i> ,Saint Ola'
	13 <i>Hakonechloa macra</i> ,Aureola'
	6 <i>Hebe albicans</i>
	5 <i>Heuchera</i> ,Obsidian'
	16 <i>Heuchera villosa</i> var. <i>macrorrhiza</i>
	4 <i>Hydrangea arborescens</i> ,Lime Rickey'
	22 <i>Luzula nivea</i>
	4 <i>Persicaria amplexicaule</i> ,Inverleith'
	3 <i>Phormium</i> ,Sundowner'
	7 <i>Salvia microphylla</i> ,Heatwave Blast'
	4 <i>Salvia officinalis</i> ,Purpurascens'
	9 <i>Sarcococca confusa</i>












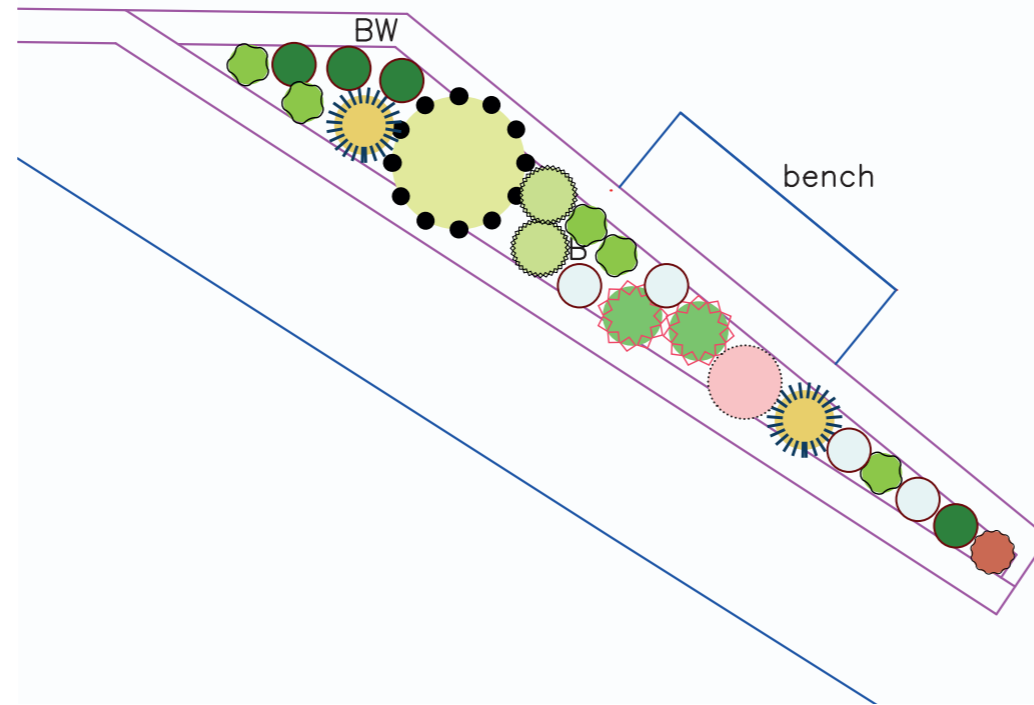
**How to start:**

- put out *Hydrangeas*, *Phormium* and *Sarcococca* first
- add *Anemanthele*, *Salvias* and *Hebe*, followed by
- *Anemone*, *Persicaria* and *Hakonechloa*
- add all other plants
- finish with *Geranium* ,*St. Ola*' around the edges
- fill gaps between plants which will eventually be bigger (like *Anemone* and *Persicaria*) with *Anthriscus* (middle of bed) and *Aquilegia*

<b>Project</b> CHISWICK HIGH ROAD / OLD MARKET SQUARE FLOWER BEDS	
<b>Drawing No</b> BED 2 Chiswick High Road (30 m <sup>2</sup> )	
<b>Client</b> Chiswick Flower Market, London W4	
<b>Designer</b> Dipl. Ing. Jutta Wagner, teowagner@aol.com	
<b>Surveyer</b> Matrix Surveys, London W4	
<b>Date</b> 21. October 2021	<b>drawn by</b> JW



	2 Anemanthele lessoniana
no symbol	3 Anthriscus sylvestris ,Ravenswing'
no symbol	5 Aquilegia vulgaris ,White Barlow'
	4 Bergenia ,Silberlicht'
	2 Deschampsia caespitosa ,Goldtau'
	4 Gaura lindheimeri
	1 Heuchera ,Obsidian'
	5 Heuchera villosa var. macrorrhiza
	1 Hydrangea arborescens ,Lime Rickey'
	1 Persicaria amplexicaule ,Inverleith'
	2 Phormium ,Sundowner'



**How to start:**

- put out *Hydrangea* and *Phormium* first
- add *Persicaria*, *Anemanthele* and *Deschampsia*, followed by
- *Gaura*
- add smaller plants
- fill gaps between plants which will eventually be bigger with *Anthriscus* (middle of bed) and *Aquilegia*

**Project**

CHISWICK HIGH ROAD / OLD MARKET SQUARE  
FLOWER BEDS

**Drawing No**

**BED 3**  
Chiswick High Road / Devonshire Road (3,0 m<sup>2</sup>)

**Client**

Chiswick Flower Market, London W4

**Designer**

Dipl. Ing. Jutta Wagner, teowagner@aol.com

**Surveyer**

Matrix Surveys, London W4






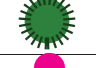


**Date**

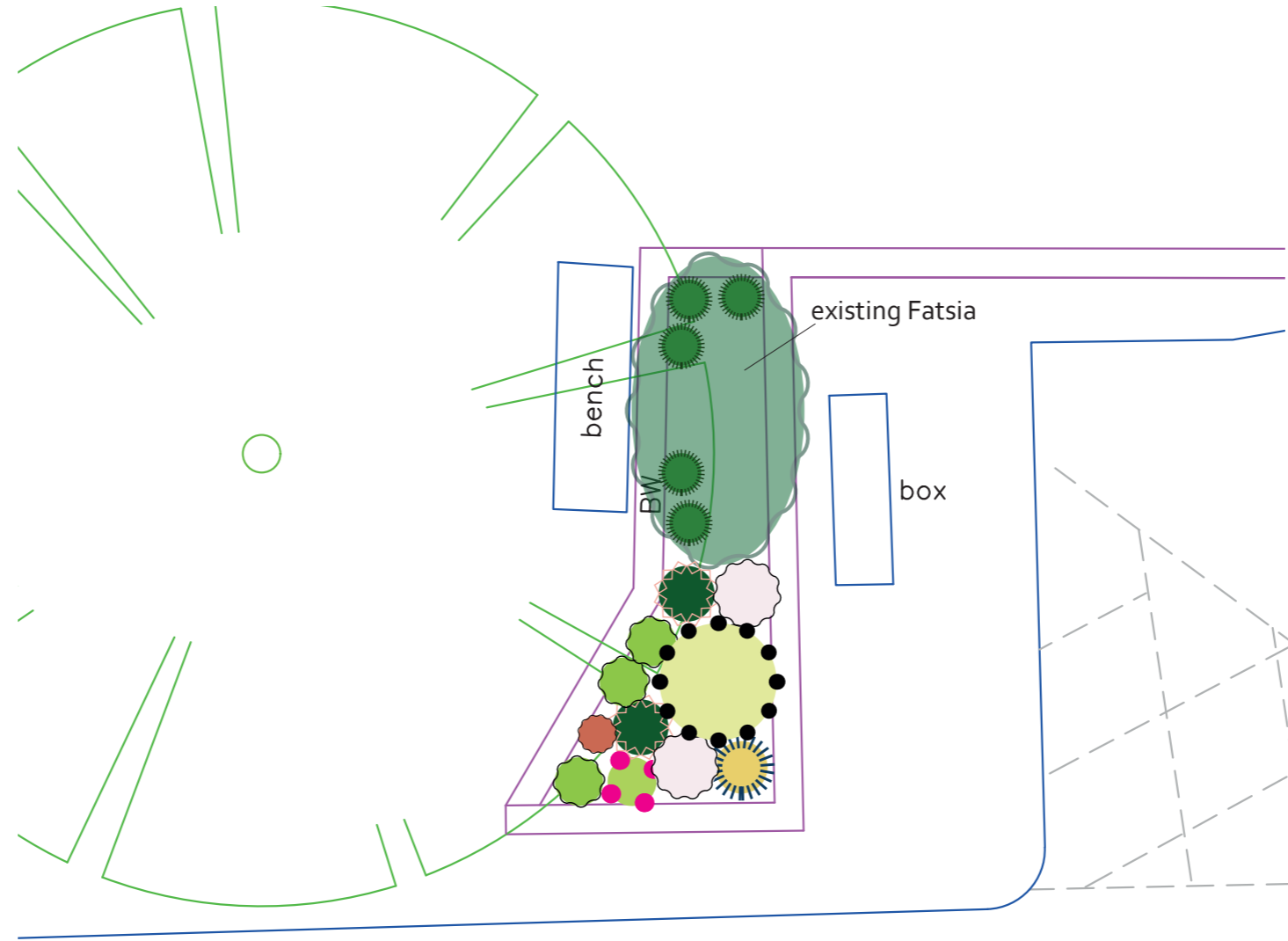
21. October 2021

**drawn by**

JW



	1 <i>Anemanthele lessoniana</i>
	2 <i>Anemone x hybrida</i> ,Honorine Jobert'
no symbol	3 <i>Anthriscus sylvestris</i> ,Ravenswing'
no symbol	5 <i>Aquilegia vulgaris</i> ,White Barlow'
	1 <i>Heuchera</i> ,Obsidian'
	3 <i>Heuchera villosa</i> var. <i>macrorrhiza</i>
	1 <i>Hydrangea arborescens</i> ,Lime Rickey'
	5 <i>Luzula nivea</i>
	1 <i>Salvia microphylla</i> ,Heatwave Blast'
	2 <i>Sarcococca confusa</i>



**How to start:**

- put out *Hydrangeas* and *Sarcococca* first
- add *Anemanthele*, *Anemone* and *Salvia*
- add smaller plants
- plant *Anthriscus* and *Aquilegia* in gaps between plants which will eventually be bigger

**Project**

CHISWICK HIGH ROAD / OLD MARKET SQUARE  
FLOWER BEDS

**Drawing No**

**BED 4**  
Chiswick High Road / opposite Armstrong Cuthbert (4 m<sup>2</sup>)

**Client**

Chiswick Flower Market, London W4

**Designer**

Dipl. Ing. Jutta Wagner, teowagner@aol.com

**Surveyer**

Matrix Surveys, London W4




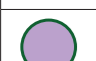




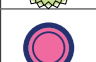

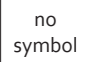


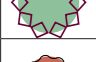




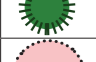

**Date**

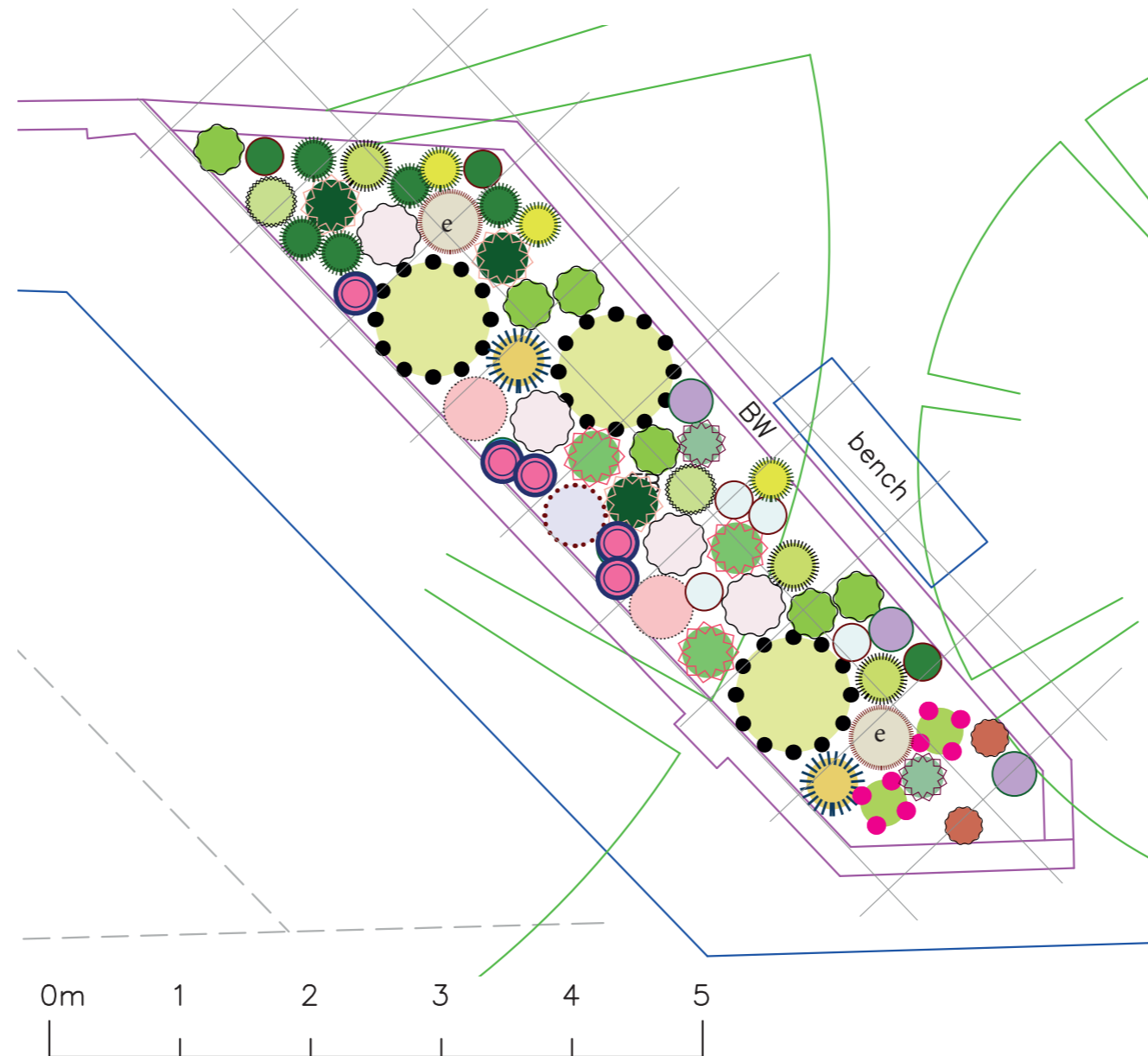
21. October 2021

**drawn by**

JW



	2 <i>Anemanthele lessoniana</i>
	4 <i>Anemone x hybrida</i> ,Honorine Jobert'
no symbol	10 <i>Anthriscus sylvestris</i> ,Ravenswing'
no symbol	10 <i>Aquilegia vulgaris</i> ,White Barlow'
	3 <i>Bergenia</i> ,Silberlicht'
	3 <i>Campanula poscharskyana</i>
	3 <i>Carex oshimensis</i> ,Evergold'
	1 <i>Cenolophium denudatum</i>
	2 <i>Deschampsia caespitosa</i> ,Goldtau'
	5 <i>Digitalis</i> ,Pink Panther'
	2 <i>Eurybia divaricata</i>
	3 <i>Gaura lindheimeri</i>
no symbol	10 <i>Geranium x cantabrigiense</i> ,Saint Ola'
	3 <i>Hakonechloa macra</i> ,Aureola'
	2 <i>Hebe albicans</i>
	2 <i>Heuchera</i> ,Obsidian'
	6 <i>Heuchera villosa</i> var. <i>macrorrhiza</i>
	3 <i>Hydrangea arborescens</i> ,Lime Rickey'
	5 <i>Luzula nivea</i>
	2 <i>Persicaria amplexicaule</i> ,Inverleith'
	3 <i>Phormium</i> ,Sundowner'
	2 <i>Salvia microphylla</i> ,Heatwave Blast'
	9 <i>Sarcococca confusa</i>



**How to start:**

- put out *Hydrangeas*, *Phormium* and *Sarcococca* first
- add *Anemanthele*, *Salvias* and *Hebe*, followed by
- *Anemone*, *Persicaria*, *Digitalis* and *Cenolophium*
- add all other plants
- finish with *Geranium* ,*St. Ola*' around the edges
- fill gaps between plants which will eventually be bigger (like *Anemone* and *Persicaria*) with *Anthriscus* (middle of bed) and *Aquilegia*

<b>Project</b>	CHISWICK HIGH ROAD / OLD MARKET SQUARE FLOWER BEDS	
<b>Drawing No</b>	BED 5 Chiswick High Road / opposite Foster Books (12m <sup>2</sup> )	
<b>Client</b>	Chiswick Flower Market, London W4	
<b>Designer</b>	Dipl. Ing. Jutta Wagner, teowagner@aol.com	
<b>Surveyer</b>	Matrix Surveys, London W4	
<b>Date</b>	21. October 2021	<b>drawn by</b> JW